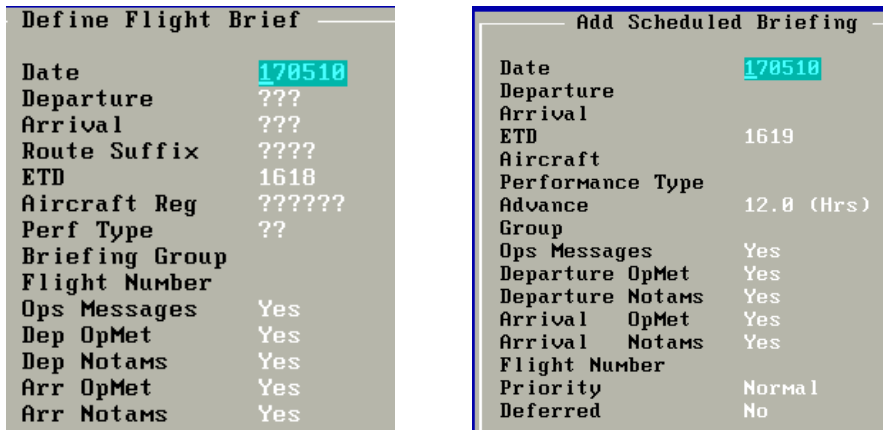


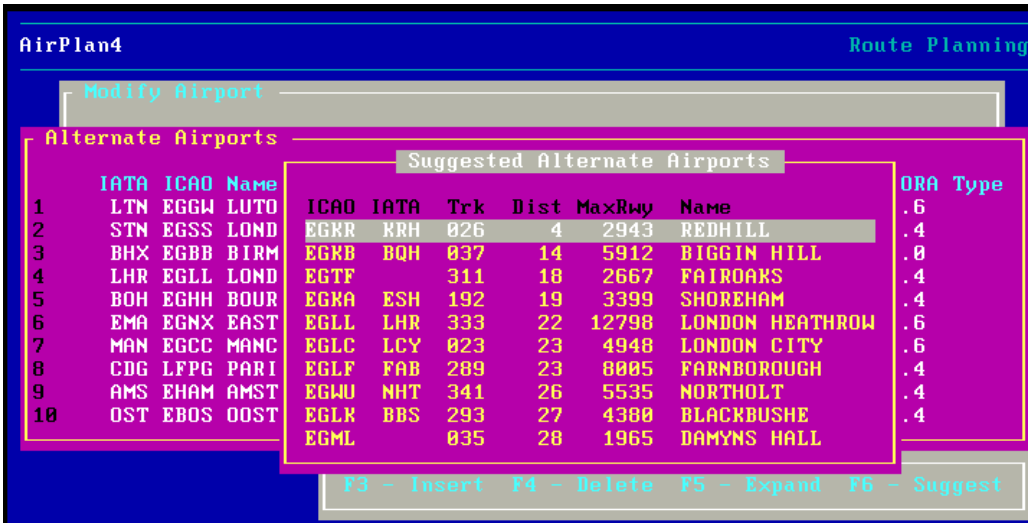
New Features in 4.1.1 (Release dated 8 April 2010)

1. Enhanced flight briefs with additional control over the application of OpMet and Notams.



Dep and Arr OpMet and Notams can now be de-selected (default is YES) in Flightbrief

2. Added items to the suggested alternate airport display.



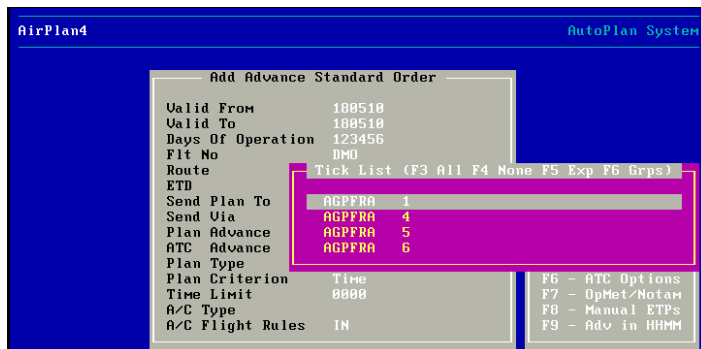
Now includes IATA/ICAO codes, Track, Distance, Max Runway and Airport Name

3. Updated the FMTXML format to comply with ARINC 633 Supplement 1.

Includes changes made for a newer version for EFB application.

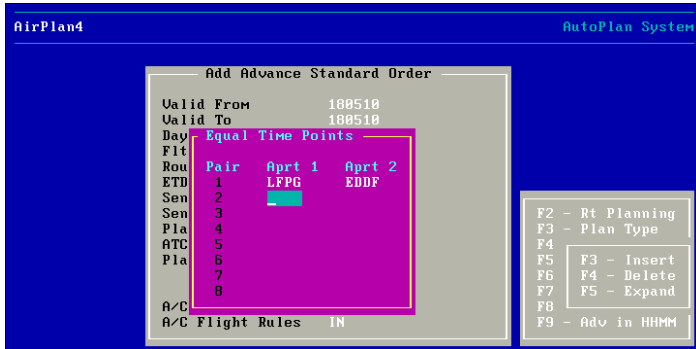
This newer version implements the **ARINC 633 supplement 1** paper.

4. Extended Autoplan setup of Best Route plans with a tick list of routes to process.



Allows selection of required routes from city-pair listing for autoplan rule consideration.

5. Enhanced AutoPlan to allow manual ETP airports to be specified.



Enroute airports for ETPs can be entered (as for a normal flightplan) – user choice entirely

6. Back-up service

Customers can chose to have their system data backed up on our servers here, for storage only. Disaster recovery procedures would require other work (replacement of hardware or AP4 software)

(Description of functionality and set-up details to be provided later)

7. Web Portal

Web Portal requires ATC-plan work to be completed for it to be available as a commercial module.

(A descriptive document has been written – but needs addition of this functionality and removal of Weather Watch references).